

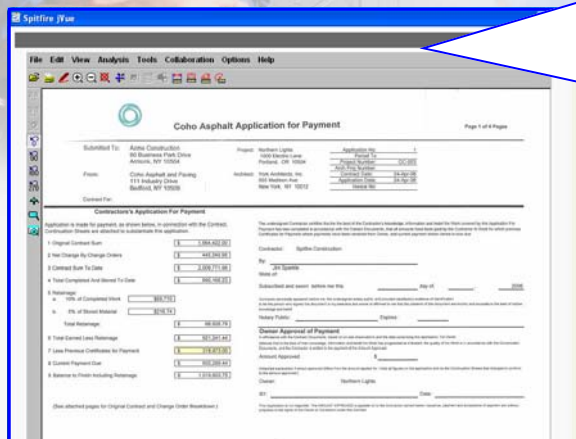
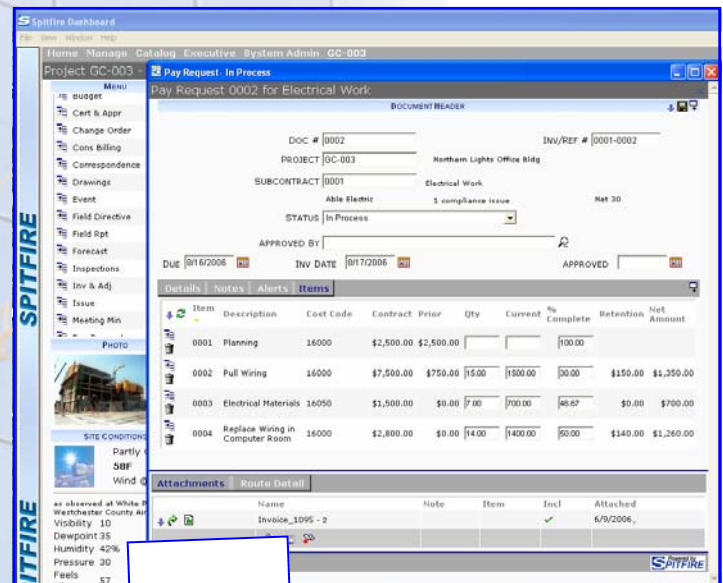
Subcontractor Pay Management

Web Based On Line Pay Requests

Now your subcontractors can submit pay requests directly online. By simply logging on to your Spitfire Project Management web site with a secure username and password, your subcontractors can create pay requests that are automatically routed to appropriate staff for review and approval.

Spitfire Pay Requests are specifically designed for direct entry by subcontractors. Pay Requests are linked directly to the Subcontract, so Pay Request line items are generated automatically and prior request amounts are calculated and displayed. Retention and Caps from the subcontract are also tracked. Subs can quickly and efficiently enter their pay requests by Percent Complete, Units Completed, or Amount. Retention is automatically computed. Your sub can even attach an electronic copy of his invoice or scan the invoice directly into Spitfire where it will become part of the Spitfire Catalog and viewable using the built-in Spitfire Document Viewer.

At your discretion, Pay Requests can be set up on a scheduled basis using Spitfires automated workflow engine. Your Subcontractors will automatically receive a Pay Request into their system Inbox each month at the appropriate time. They simply respond by completing the document, which invokes the automatic routing back to your staff for the appropriate for review and approval. This can help insure that Pay requests are submitted on a timely basis.



With Spitfire Online Pay Requests, your staff's workload is reduced since entry is done online by the subcontractor. Subcontractors prefer online entry since they can submit pay requests faster and easily check the status of the pay requests. Spitfire is a browser-based application that does not require your subcontractor to install any software; they just log into your web site with a secure login and password. Tight security keeps them outside your firewall, and strictly limits access to only the information necessary to complete the pay request. Your subcontractor's login can limit them to only Pay Request entry, or could include RFIs and other documents that you choose to include in their access permissions. Spitfire uses concurrent licensing, so your subcontractors will be using a license only for the short time required for entry of the pay request.