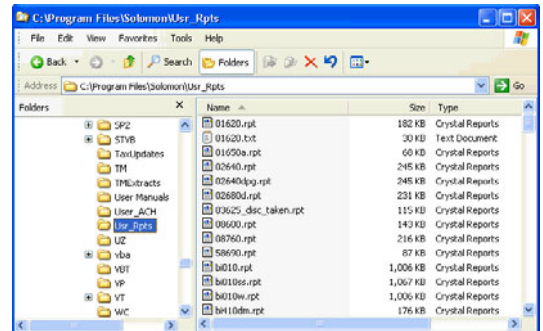


Flexible Reporting

Spitfire's construction management system includes a full suite of reports; everything from simple customer lists to job costing reports. But no matter how complete our report suite, you may find that you'd like to add a new report, or simply modify one of the existing reports. No problem. Spitfire's construction management system is designed to let you add your own customized reports; you can replace the standard report with your version or add your new custom report to the menu.

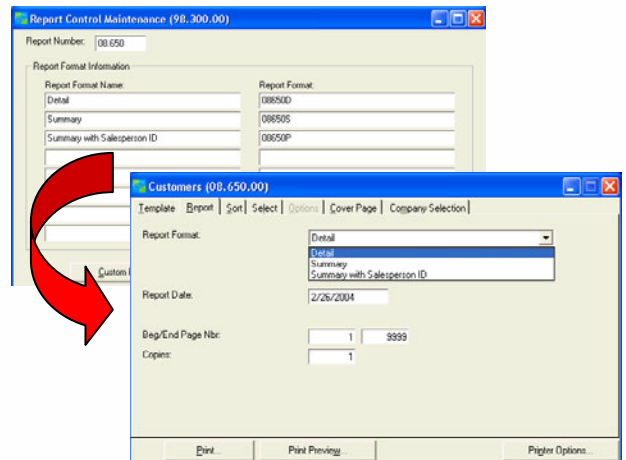
Flexibility

Modify a report Standard reports are stored in module folders. For example, Time and Expense for Project reports are stored in the TM folder along with the Time and Expense for Project programs and screens. More importantly though, we've included a Usr_Rpts folder and we've programmed the Report Generator to check the Usr_Rpts folder first before moving to the standard report in the module folder. Therefore, if you modify report bi010.rpt (the invoice report) and place it in the Usr_Rpts folder, the system will print your version of the report instead of the standard invoice. One of the benefits of this system is that you only have to remove or rename the report in the Usr_Rpts folder whenever you choose to print the standard report.



Add a report Using the same Usr_Rpts folder, you can add a second or third version to a standard report. For example, the Customer reports has two versions: Detail and Summary. The Detail version includes Salesperson ID, but the Summary version does not. If you modify the Summary version to include Salesperson ID and Customer Contact Name and delete the Future Balance column, you may want to add this third version as Summary with Salesperson ID.

Once you create your report and add it to the Usr_Rpts folder, the Report Control Maintenance utility lets you add your version of the report to the Customer report menu quickly and easily.



Powerful Report Options

Spitfire includes highly flexible report control options. Beyond simply using industry standard Crystal Reports as the system reporting engine, Spitfire maintains a powerful report control function that precludes users from modifying underlying Crystal Report source code in order to achieve many common report customizations. This function flexibly passes information to Crystal Reports, giving user-defined control over, data selection criteria, sorting, grouping, page breaking and totaling **without customizing** the underlying Crystal Report source code. You can then create a library of report "data templates" for each report, allowing you to easily create and store for retrieval multiple "flavors" of a report, each with the same look and feel.

Flexible Reporting

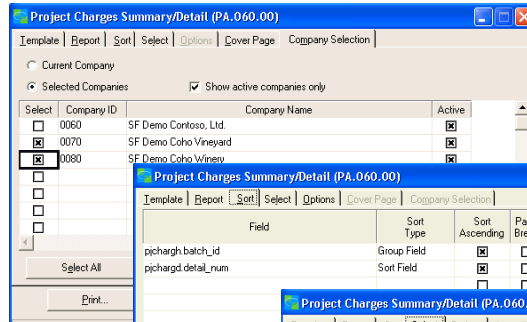
Export

Any report can be exported. Just preview the report, click the export button, and select your destination: Crystal, Word, Excel, Acrobat, etc.

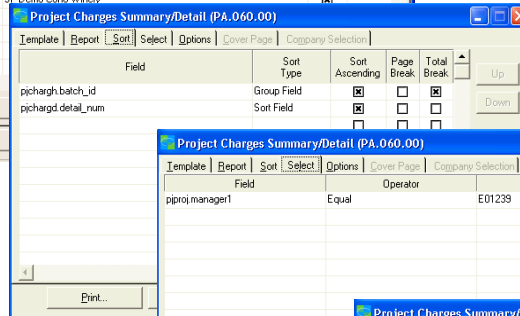
And FRx

Most of our reports are written with Crystal Reports Version 8.5. The exceptions are the Income Statement and Balance Sheet reports. These GL reports are FRx reports; a flexible and easy-to-use report tool that is designed specifically for financial statements. Along with the GL module, you'll receive FRx Designer and the basic financial statements.

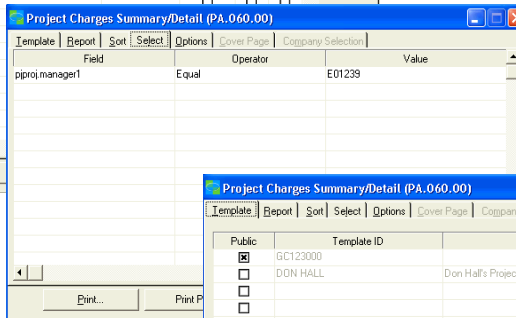
Since FRx builds reports based on a building block approach, it's extremely flexible. First you build your Row Format, which includes all the accounts that you'd like to include on the report. Then you build your Column Format, which includes the Period (s), Totals, and Comparison data you'd like to include. By simply combining a Row Format with Column Format, you've build a report. Use the third building block, your tree structure to include all your divisions, or limit to just one division, or selected divisions.



If you have multiple companies, you can decide which companies to include.

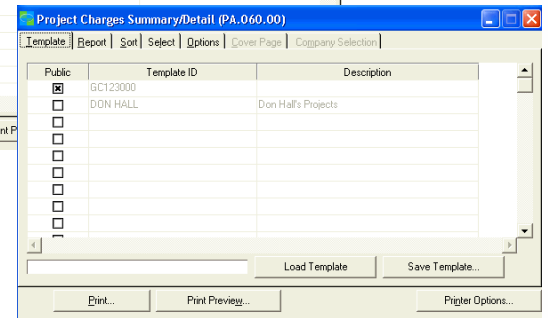


Sort order can be selected.



Content can be limited by entering report criteria.

Your selections can be saved in a template that can be used over and over again.



Flexible Column Reporting

The reports are written, the formatting and columns are included, but you get to decide the column headings and the column content. By using the Flexible Column Maintenance function, you can select what to include the column and what to name it. In the example below, Column 1 is defined as Current Hours and Labor, Labor-Premium, and Subcontract amounts will be summed in Column 1, Column 2 is defined as Current Cost and the same Account Categories are used, but this time the cost rather than the units are summed. And so on. This powerful feature allows you to define the report to match your business.

Report	Column	Acct Category	GL Account	Column Heading
PA100-0	1	LABOR		Current Hours
PA100-0	1	LABOR-PREMIUM		Current Hours
PA100-0	1	SUBCONTRACT		Current Hours
PA100-0	2	LABOR		Current Cost
PA100-0	2	LABOR-PREMIUM		Current Cost
PA100-0	2	SUBCONTRACT		Current Cost
PA100-0	3	LABOR		PTD Hours
PA100-0	3	LABOR-PREMIUM		PTD Hours
PA100-0	3	SUBCONTRACT		PTD Hours
PA100-0	4	LABOR		PTD Cost
PA100-0	4	LABOR-PREMIUM		PTD Cost
PA100-0	4	SUBCONTRACT		PTD Cost
PA100-0	5	LABOR		Curr Budget

Date: Thursday, February 26, 2004
 Time: 1:39:01PM
 User: SYSADMIN

SF Dem o Contoso, Ltd. Project Task Summary (Curr)

Period Ending 01-1998

	Current Hours	Current Cost	PTD Hours	PTD Cost	Curr Budget
Consult					
	104.00	7,829.82	196.00	11,031.55	25,000.00
	15.00	512.55	21.00	735.63	3,000.00
Consult	119.00	8,342.37	217.00	11,767.18	28,000.00